	Title WLAN Printer Setup User's Manual	Rev. 1.00	Date 13/09/2005
---	---	----------------------------	----------------------------------

WLAN Printer Setup

User's Manual

	Title WLAN Printer Setup User's Manual	Rev. 1.00	Date 13/09/2005	Page 2/14
--	---	----------------------------	----------------------------------	----------------------------

Contents

1. INTRODUCTION	3
1.1. Document releases	3
1.2. Reference documents	3
1.3. Conventions	3
1.4. Notes	3
2. ARCHITECTURE	4
3. WLAN PRINTER CONFIGURATION	5
4. RESTORE FACTORY SETTINGS.....	13
5. LEDS DESCRIPTION	14

	Title WLAN Printer Setup User's Manual	Rev. 1.00	Date 13/09/2005	Page 3/14
--	---	----------------------------	----------------------------------	----------------------------

1. Introduction

This document describes the operations needed to configure a WLAN Printer using the Lan Printer Setup tool.

1.1. Document releases

Revision	Date	Pages	Comments
1.00	13/09/2005	14	First edition

1.2. Reference documents

Reference	Name	Description	Code
-----------	------	-------------	------

1.3. Conventions

Example	Description
(Es. 1)	Reference document number. Es. (Es. 1) Means first document of the reference documents list.

1.4. Notes

For the WiFi tests we have used the following Wireless Usb Adapters :

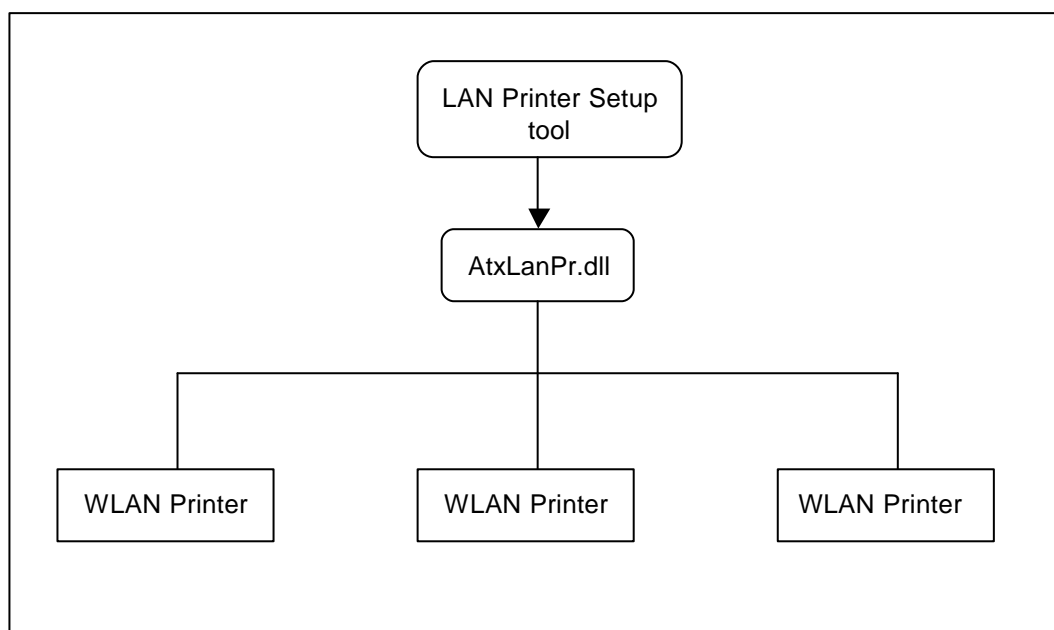
?? **Netgear MA111**

?? **Digicom WAVE 54**

	Title WLAN Printer Setup User's Manual	Rev. 1.00	Date 13/09/2005	Page 4/14
--	---	----------------------------	----------------------------------	----------------------------

2. Architecture

The Lan Printer Setup tool use the Olivetti AtxLanPr.dll ActiveX to communicate with the WLAN printers using the UDP protocol.



	Title WLAN Printer Setup User's Manual	Rev. 1.00	Date 13/09/2005	Page 5/14
--	---	----------------------------	----------------------------------	----------------------------

3. WLAN Printer Configuration

To Initialize and configure a WLAN printer follow this step :

1. Power on the printer.
After waiting a little, hold down the **reset button** on the WiFi interface (Fig. 1) and after a short beep release it. Wait a little timeout (about 30 seconds) and the printer prints the WiFi Configuration Sheet.

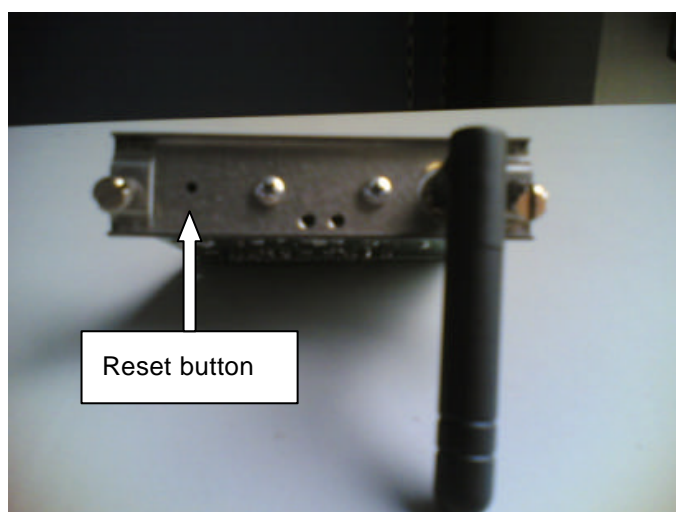


Fig. 1

An example of WiFi Configuration Sheet:

Please, wait

***** WIFI Interface Card *******

MAC Address : 00:20:4A:82:4C:81
 Fw Ver. : 06.00

TCP/IP Settings

IP Address : 169.254.21.40
 Gateway IP Add. : 0.0.0.0
 Subnet mask : 255.255.0.0

WiFi Settings

Network Name : DefaultSSID
 Ad Hoc Enable
 Channel : 11
 Authentication : None

	Title WLAN Printer Setup User's Manual	Rev. 1.00	Date 13/09/2005	Page 6/14
--	---	----------------------------	----------------------------------	----------------------------

2. Prepare a PC with a Wireless Adapter and configure it to communicate with the WLAN printers.

The requirements for the PC are the following :

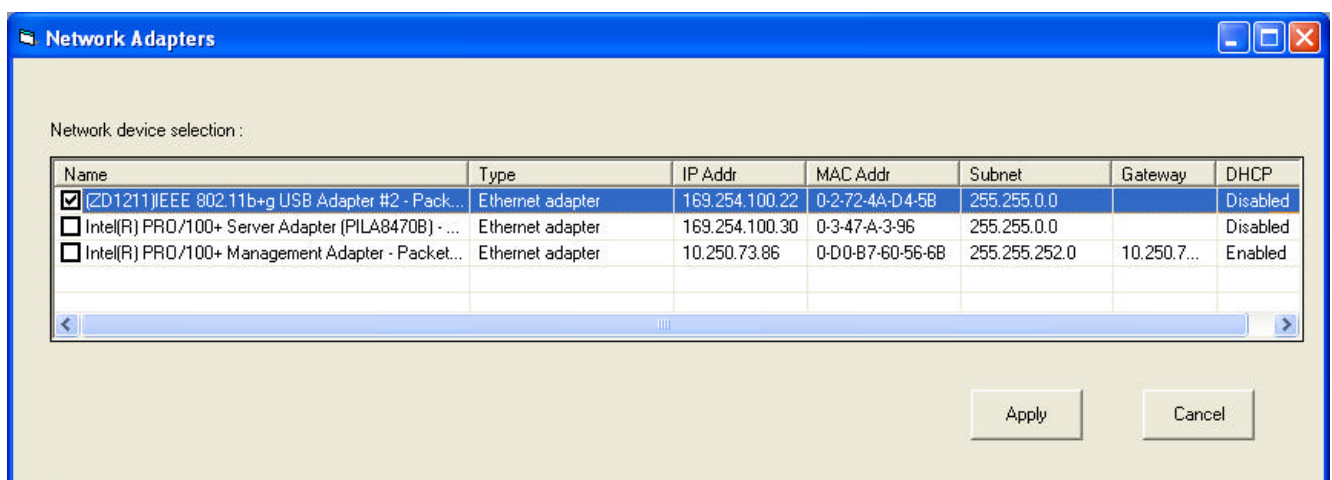
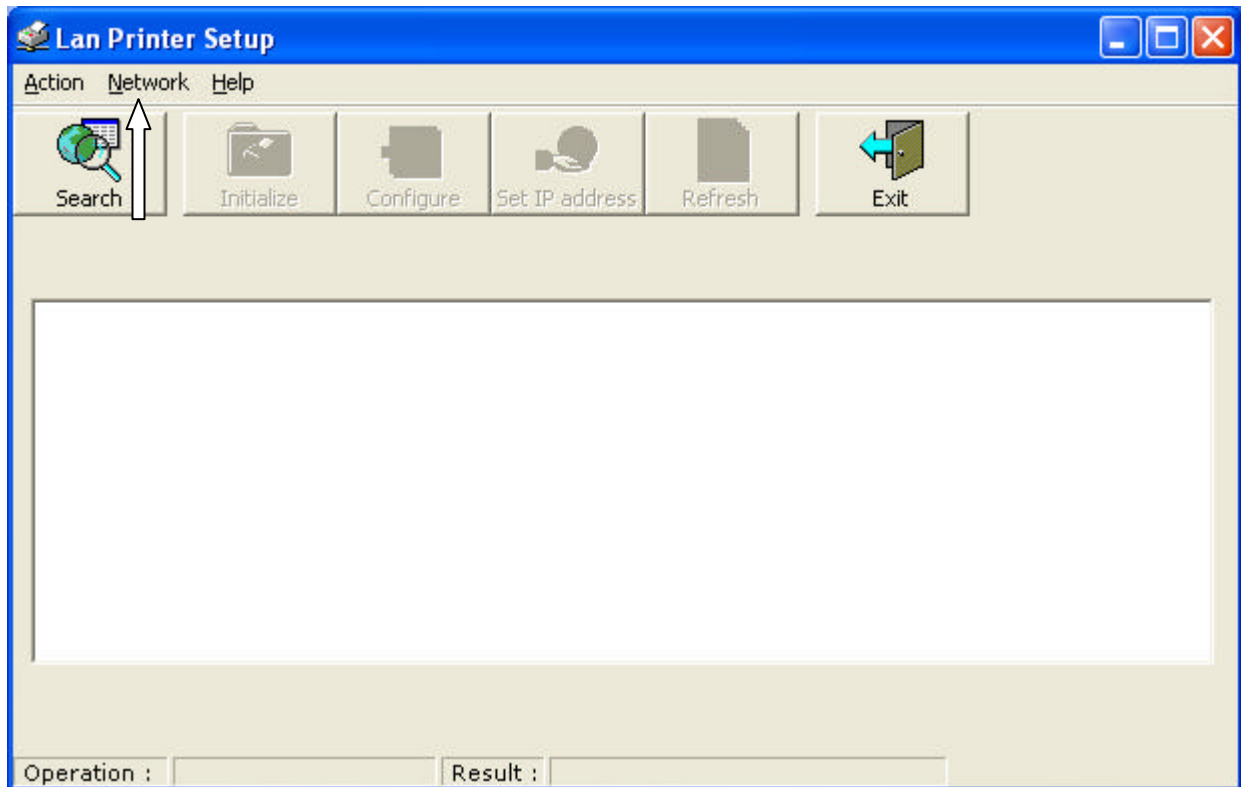
- ?? OS : Windows 2000/XP
- ?? Communication port : 802.11b Wireless adapter
- ?? Network setting :TCP/IP Protocol installed

Adjust the Wireless Adapter settings on the PC to correspond to the WiFi Configuration Sheet. The default setting items are the following :

- ?? Network Mode : **Ad-Hoc**
- ?? SSID : **DefaultSSID**
- ?? Country : **Others (Europe)**
- ?? Security : **None**
- ?? Authentication : **None**
- ?? Channel : **11**
- ?? IP address : **AutoIP** (from 169.254.1.0 to 169.254.254.255)

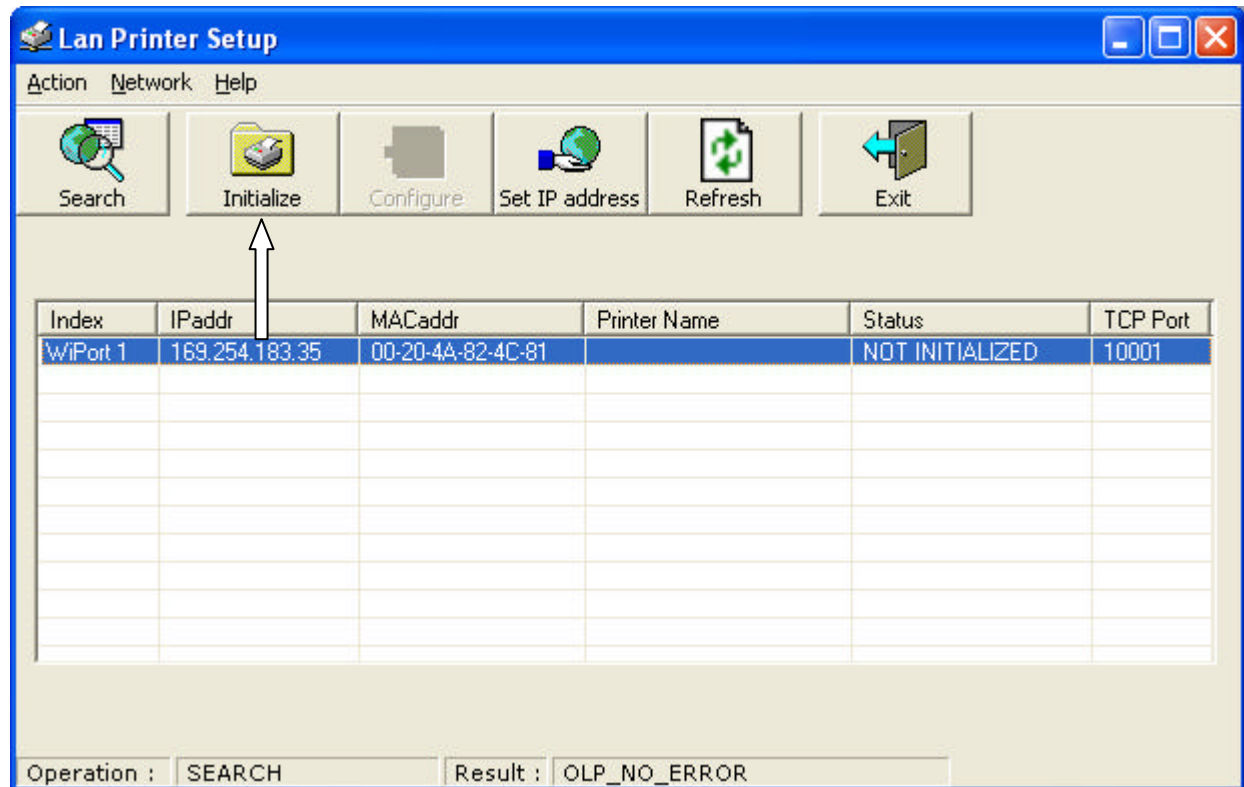
3. Run the **LAN Printer Setup** tool.

If you have installed on your PC more than one Network Interface card, select the **Network** menu and select the Network wireless device configured to communicate with the printer:

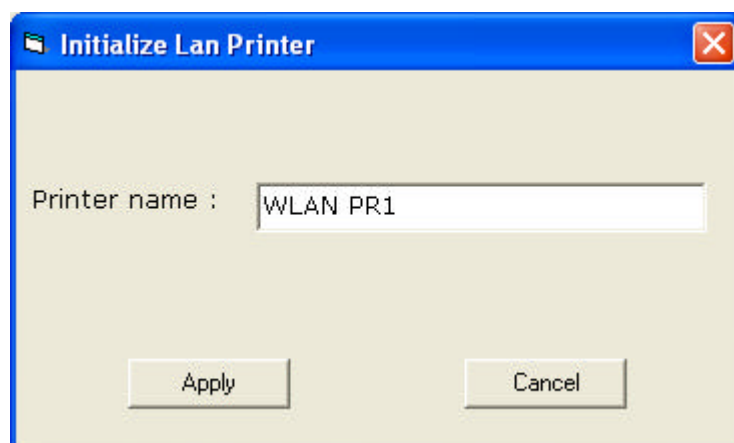


5. **Initialize** the printer

The first time the printers are in NOT INITIALIZED status and must be initialized using the **Initialize** button.



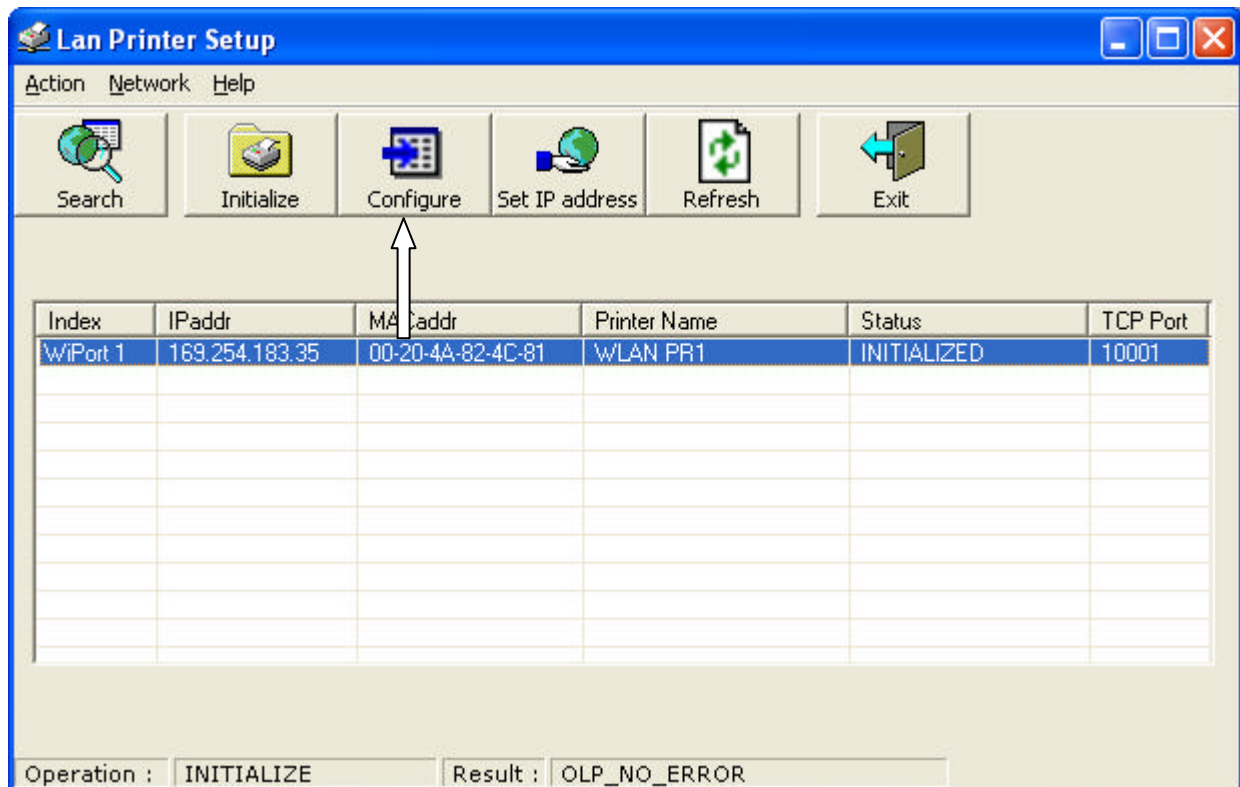
Initialize a printer consists to assign it a printer name:



To take back the printer in the NOT INITIALIZED status select the Action/Reset menu.

6. **Configure** the printer.

When the printer is in the INITIALIZED Status it can be **configured**.



On this phase can be changed the TCP/IP parameters (IP address, Subnet, Gateway, TCP Port) , or the WiFi parameters (SSID, Channel , Country, Security).

The screenshot shows a 'Configure' window with two tabs: 'TCP parameters' and 'Wi-Fi parameters'. The 'Wi-Fi parameters' tab is active. It contains three main sections: 'Infrastructure' (disabled), 'Ad Hoc' (selected), and 'Enable WEP' (disabled). The 'Ad Hoc' section has a 'Network Name (SSID)' field set to 'DefaultSSID', a 'Country' dropdown set to 'OTHERS', and a 'Channel' dropdown set to 'Channel 11'. The 'Enable WEP' section has 'Key Length' and 'Authentication type' dropdowns both set to 'NONE', and a 'WEP key' field. At the bottom, there is an 'Advanced parameters' section with a 'Transmission Data Rate' dropdown set to '11, 5.5, 2, 1 Mbps'. 'Apply' and 'Cancel' buttons are at the bottom right.

Configure

TCP parameters | **Wi-Fi parameters**

☐ Infrastructure

Network Name (SSID): DefaultSSID

☒ Ad Hoc

Network Name (SSID): DefaultSSID

Country: OTHERS Channel: Channel 11

☐ Enable WEP

Key Length: NONE Authentication type: NONE

WEP key:

Advanced parameters

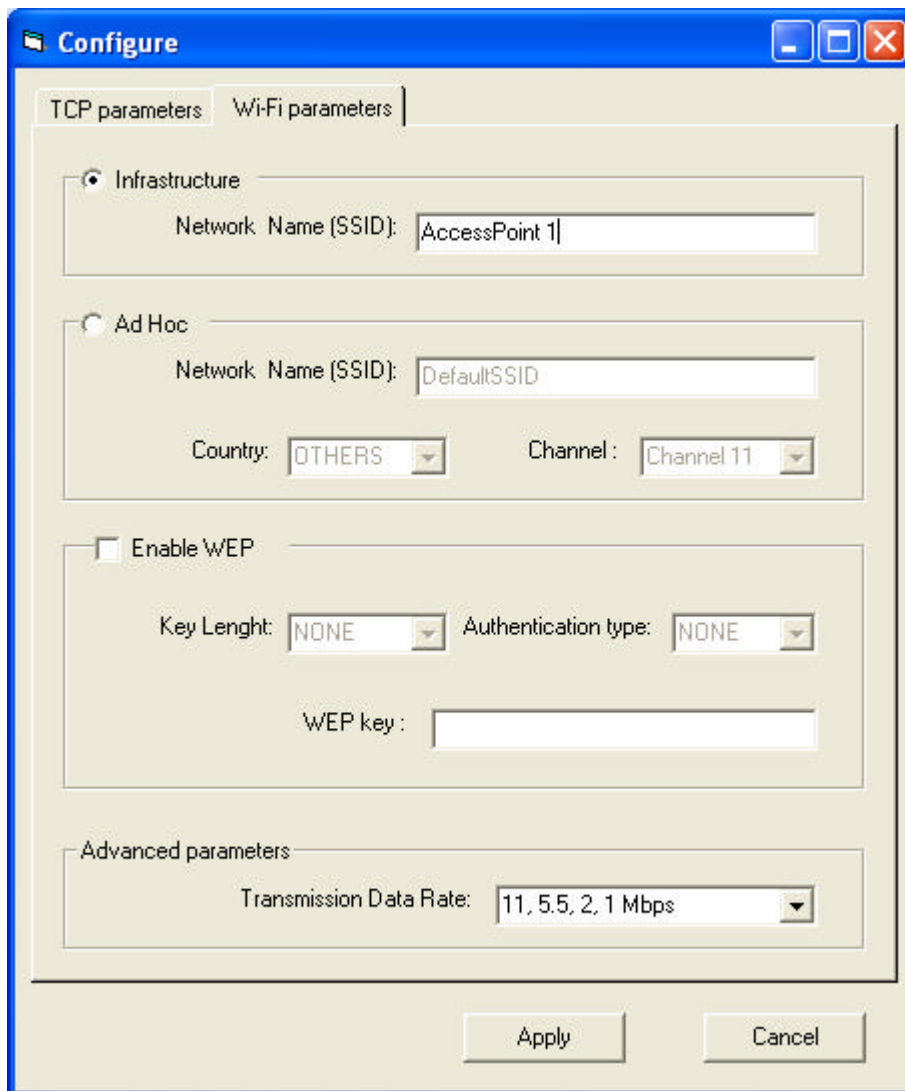
Transmission Data Rate: 11, 5.5, 2, 1 Mbps

Apply Cancel

	Title WLAN Printer Setup User's Manual	Rev. 1.00	Date 13/09/2005	Page 12/14
--	---	----------------------------	----------------------------------	-----------------------------

7. Switch to Infrastructure mode

If you need to switch from the Ad-Hoc mode to a connection with a **Wireless Access Point** (Infrastructure mode) , on the **Configure** menu select the tab **WiFi parameters**, check the option **Infrastructure** and insert the Access Point's Network name (SSID).



Configure

TCP parameters | **WiFi parameters**

☒ Infrastructure

Network Name (SSID): AccessPoint 1

☐ Ad Hoc

Network Name (SSID): DefaultSSID

Country: OTHERS Channel: Channel 11

☐ Enable WEP

Key Length: NONE Authentication type: NONE

WEP key:

Advanced parameters

Transmission Data Rate: 11, 5.5, 2, 1 Mbps

Apply Cancel

After to have closed the Configure window, select the **Network menu**, select the Network device connected on the same LAN of the Access Point and repeat the **Search** operation (see Step 3 and 4).

	Title WLAN Printer Setup User's Manual	Rev. 1.00	Date 13/09/2005	Page 13/14
--	---	----------------------------	----------------------------------	-----------------------------

4. Restore factory settings

Hold down the **reset button** on the WiFi interface, after a short beep wait again about ten seconds and release it after the second beep.

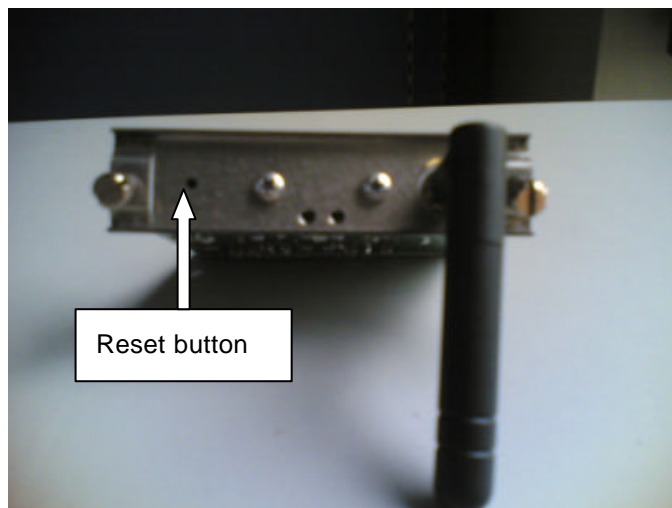


fig 2

If the operation succeeds the printer prints :

Please, wait loading default

***** WIFI Interface Card *****

Default values loaded

	Title WLAN Printer Setup User's Manual	Rev. 1.00	Date 13/09/2005	Page 14/14
--	---	----------------------------	----------------------------------	-----------------------------

5. Leds description

The WiFi interface contains two LEDs built into the front of the interface (Fig 3).

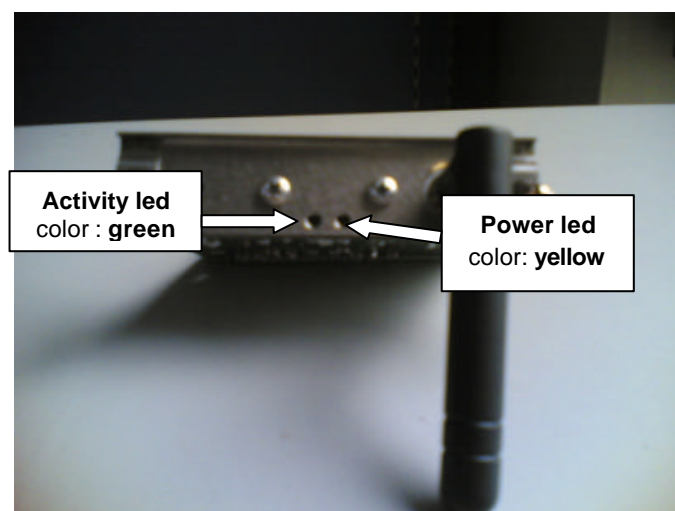


fig. 3

The led status can assume the following values :

- ?? **Activity led** - when is blinking , it is receiving or transmitting wireless data, when it is off , it indicates there is no wireless activity;
- ?? **Power led** – when is on , it indicates the radio is on and in normal mode, when it is blinking , it indicates the radio is in power saving mode.